

**railair**  
& you're there

to & from  
Reading



quick,  
comfortable  
coach link between  
Reading Station &  
Heathrow  
Airport



DAILY  
EARLY TO LATE  
UP TO EVERY 30 MINS

from 23 July 2023

tickets  
railair.com

information  
railair.com  
0345 646 0707  
@railair



Reading-Heathrow T5  
43 mins during the day

Fast trains can get you into Reading Station from all over the West Country and South Wales, then it's just a short coach connection direct to Heathrow Airport.

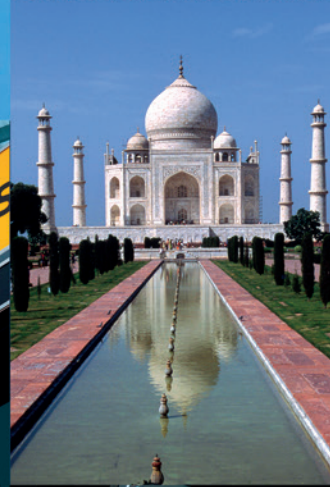
RailAir really is the best way to the airport. The coaches are smart, stylish and extremely comfortable. Sit back and relax into plush armchair seats and take advantage of the free Wi-Fi and at-seat USB charging. Some seats are set around tables, ideal for up to four travelling together.

There's plenty of room for all your luggage in the large hold and there are additional racks inside above your seat. The driver can help you with any awkward items.

[railair.com](http://railair.com)



**railair**  
& you're there



Time	Destination
17:55	Bilbao
17:55	Barcelona
17:55	Shannon
18:00	Edinburgh
18:00	Bydgoszcz
18:05	Gothenburg City
18:05	Granada
18:10	Athens
18:10	Stockholm
18:10	Newcastle
18:15	Copenhagen
18:20	Belfast
18:30	Glasgow
18:35	Rome Ciampino
18:40	Munich
18:45	Porto





RailAir coaches drop you off right outside Terminals 2, 3 and 5.

Here's how to find RailAir coaches for the journey to Reading Station.

**from Terminal 2**

Follow signs to buses & coaches - go to stand 11/12.

**from Terminal 3**

Follow signs to buses & coaches - go to stand 7/8.

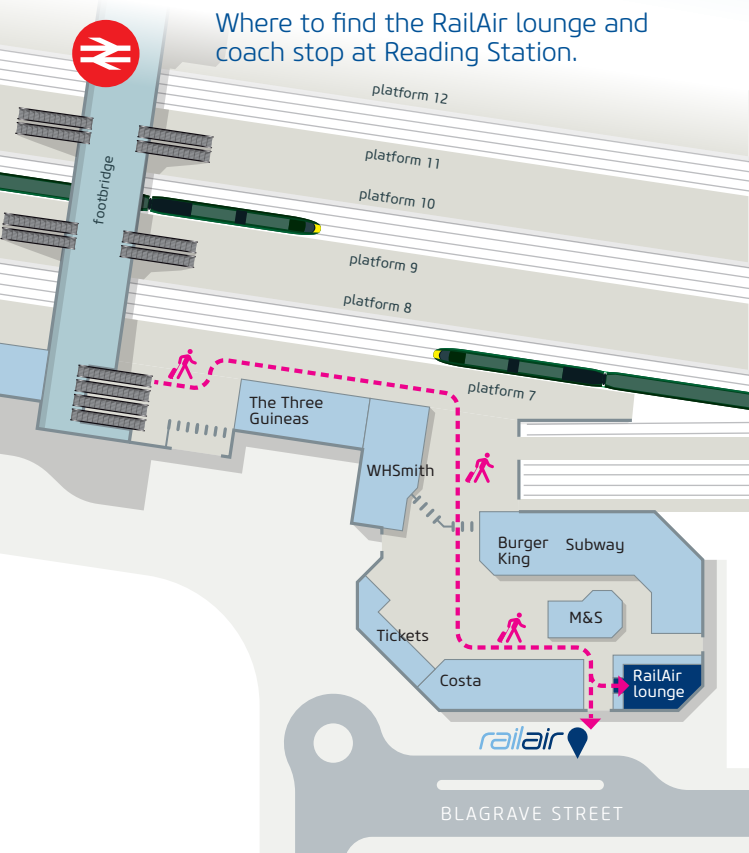
**from Terminal 5**

Follow the signs to buses & coaches - go to stand 9.

**using Terminal 4?**

Inter-terminal transfer is free by train, Underground and H30 bus. Use Oyster or contactless for trains and Underground (you won't be charged).

Where to find the RailAir lounge and coach stop at Reading Station.



## Reading to Heathrow

RA1

Reading rail station	0240	0310	0350	0410	0450	0530	0600	0625	0655	0725	0755	0825	0900	then every 30 mins until	30 00	1800	1830	1900	1930	2000	2030	2105	2205	2305
Reading Cemetery Junction	0244	0314	0354	0414	0454	0534	0604	0629	0700	0730	0800	0830	0905		35 05	1805	1835	1905	1934	2004	2034	2109	2209	2309
Thames Valley P&R	0248	0318	0357	0418	0457	0537	0607	0632	0704	0734	0804	0834	0909		39 09	1809	1839	1909	1937	2007	2037	2112	2212	2312
Heathrow Terminal 5	0337	0407	0429	0507	0529	0609	0639	0710	0742	0812	0842	0912	0943		13 43	1843	1913	1943	2009	2039	2109	2144	2244	2344
Compass Centre Newbury Rd	0343	0413	0435	0513	0535	0615	0645	0716	0748	0818	0848	0918	0949	19 49	1849	1919	1949	2015	2045	2115	2150	2250	2350	
Heathrow Terminal 2	0349	0419	0442	0519	0542	0622	0652	0723	0755	0825	0855	0925	0956	26 56	1856	1926	1956	2022	2052	2122	2157	2257	2357	
Heathrow Terminal 3	0352	0422	0445	0522	0545	0625	0656	0727	0759	0829	0859	0929	1000	30 00	1900	1929	1959	2025	2055	2125	2200	2300	0000	

go to [railair.com](http://railair.com) to check special timetables for Christmas & Easter holidays

## Heathrow to Reading

RA1

Heathrow Terminal 3	0405	0435	0500	0535	0605	0640	0710	0740	then every 30 mins until	10 40	1540	1610	1640	1710	1740	1810	1840	1910	1940	2010	2040	2110	2140	2215	2315	0015
Heathrow Terminal 2	0409	0439	0504	0539	0609	0644	0714	0744		14 44	1544	1614	1644	1714	1744	1814	1844	1914	1944	2014	2044	2114	2144	2219	2319	0019
Compass Centre stop BW	0416	0446	0511	0546	0616	0651	0721	0751		21 51	1551	1621	1651	1721	1751	1821	1851	1921	1951	2021	2051	2121	2151	2226	2326	0026
Heathrow Terminal 5	0424	0454	0519	0554	0624	0701	0731	0801		31 01	1601	1631	1701	1731	1801	1831	1901	1929	1959	2029	2059	2129	2159	2234	2334	0034
Thames Valley P&R	0456	0526	0551	0626	0656	0736	0806	0836	06 36	1636	1706	1736	1806	1836	1906	1936	2001	2031	2101	2131	2201	2231	2306	0006	0106	
Reading Cemetery Junction	0500	0530	0555	0630	0700	0740	0810	0840	10 40	1640	1710	1742	1812	1842	1912	1942	2005	2036	2105	2136	2205	2235	2311	0011	0111	
Reading rail station	0505	0535	0600	0635	0705	0745	0815	0845	15 45	1645	1718	1748	1818	1848	1918	1948	2010	2040	2110	2140	2210	2240	2315	0015	0115	

- these 3 journeys also stop at  
 Twyford Waitrose 0259 0329 0429  
 Maidenhead rail station 0315 0345 0445  
 Taplow Bishops Centre 0321 0351 0451

Coaches from Heathrow Airport to Reading will stop at **Thames Valley P&R and Cemetery Junction** by request only.  
 If you need either of these stops let the driver know when you board

### fares

We have a range of fares, including discounts for under-16s and groups of up to 4 people travelling together.

The best prices are always online and you can book up to 5pm on the day before you want to travel - just bring the printout or show on your phone when you board the coach.

We also have walk-up fares available from the Railair lounge at Reading Station or from the driver when you board.

Pay cash or contactless.

### commute to Heathrow?

Save money with our great-value season tickets

all prices [railair.com](http://railair.com)



great ways to save if you work at the airport

**Team Heathrow**

[heathrow.com/commuter](http://heathrow.com/commuter)

**BOOK EARLY FOR THE BEST PRICES**

